

**ET-M760BHWWB**  
**445W-465W**

PERC MODULE



### High Efficiency

Higher module conversion efficiency benefit from half cut cell structure (low resistance characteristic, less mismatch loss).



### MBB Solar Cell

New circuit design, shorter internal current path, lower internal resistance loss.



### PID Resistance

Excellent Anti-PID performance guarantee limited power degradation for mass production.



### Severe Weather Resilience

Certified to withstand: wind load (2400 Pascal) and snow load (5400 Pascal).

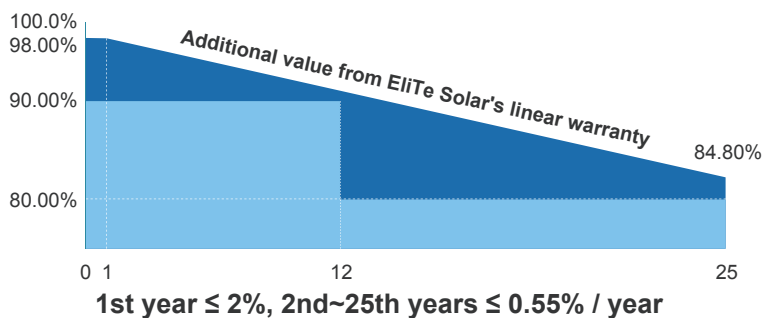


### Durability Against Extreme Environmental Conditions

High salt mist and ammonia resistance.

## WARRANTY

Standard Module Performance Warranty  
Elite Solar Mono Module Linear Performance Warranty



Guarantee on product material and workmanship



Linear power output warranty

IEC61215  
IEC61730  
UL61215  
UL61730



## ELECTRICAL SPECIFICATIONS

Module Type	ET-M760BH445WW/WB	ET-M760BH450WW/WB	ET-M760BH455WW/WB	ET-M760BH460WW/WB	ET-M760BH465WW/WB
Maximum Power -P <sub>mp</sub> (W)	445	450	455	460	465
Open Circuit Voltage -V <sub>oc</sub> (V)	41.21	41.33	41.44	41.56	41.65
Short Circuit Current -I <sub>sc</sub> (A)	13.77	13.85	13.94	14.03	14.11
Maximum Power Voltage -V <sub>mp</sub> (V)	34.50	34.70	34.85	35.07	35.26
Maximum Power Current -I <sub>mp</sub> (A)	12.90	12.97	13.06	13.12	13.19
Module Efficiency STC-η <sub>m</sub> (%)	20.6%	20.8%	21.0%	21.3%	21.5%
Power Tolerance (W)	0-+3%				
Pmax Temperature Coefficient	-0.340%/°C				
Voc Temperature Coefficient	-0.263%/°C				
Isc Temperature Coefficient	+0.054%/°C				
Fire Performance	Class C(IEC)/Type 1(UL)				

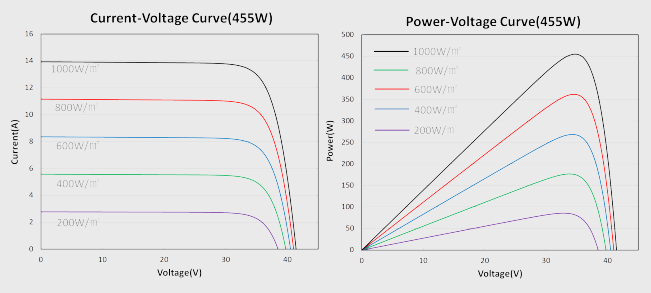
## ELECTRICAL SPECIFICATIONS(NOCT)

Module Type	ET-M760BH445WW/WB	ET-M760BH450WW/WB	ET-M760BH455WW/WB	ET-M760BH460WW/WB	ET-M760BH465WW/WB
Maximum Power -P <sub>mp</sub> (W)	334	338	342	346	350
Open Circuit Voltage -V <sub>oc</sub> (V)	38.54	38.64	38.74	38.84	38.94
Short Circuit Current -I <sub>sc</sub> (A)	11.36	11.43	11.50	11.56	11.63
Maximum Power Voltage -V <sub>mp</sub> (V)	31.04	31.24	31.44	31.63	31.82
Maximum Power Current -I <sub>mp</sub> (A)	10.76	10.82	10.88	10.94	11.00

## MECHANICAL SPECIFICATIONS

External Dimension	1908 x 1134 x 33mm
Weight	24kg
Solar Cells	PERC Mono crystalline 182 x 91 mm (120pcs)
Front Glass	3.2mm AR coating tempered glass
Frame	Anodized aluminium alloy
Junction Box	IP68, 3 diodes
Cable Length (Including Connector)	4.0 mm <sup>2</sup> (12AWG), Portrait:200mm(+)/400mm(-);Or customized
Connector	MC4 Compatible

## CURVE



## APPLICATION CONDITIONS

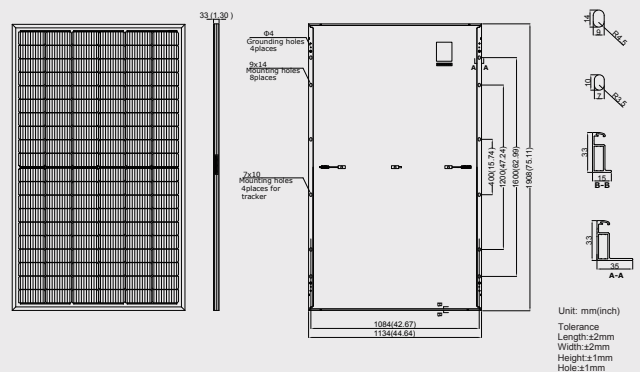
Maximum System Voltage	1500VDC
Maximum Series Fuse Rating	25A
Operating Temperature	-40--+85 °C
Nominal Operating Cell Temperature	45±2 °C
Mechanical Load	5400Pa/2400Pa

## PACKING MANNER

Container	40'HQ
Pieces per Pallet	33
Size of packing (mm)	1944*1130*1264
Weight of packing (kg)	832
Pieces per Container	792/753(NA)

## PHYSICAL CHARACTERISTICS

Unit:mm



\* The above drawing is a graphical representation of the product.  
For engineering quality drawings please contact Elite Solar.

**Note:** The specifications are obtained under the Standard Test Conditions (STCs): 1000 W/m<sup>2</sup> solar irradiance, 1.5 Air Mass, and cell temperature of 25°C. The NOCT is obtained under the Test Conditions: 800 W/m<sup>2</sup>, 20°C ambient temperature, 1m/s wind speed, AM 1.5 spectrum. Please contact [info@elite-solar.com](mailto:info@elite-solar.com) for technical support. The actual transactions will be subject to the contracts. This parameter is for reference only and it is not a part of the contracts. The specifications are subject to change without prior notice.